



R985. Maplewood Kings Park



**RICHARD
POYNTZ**

R985. Maplewood Kings Park Canvey Island Essex SS8 8FA

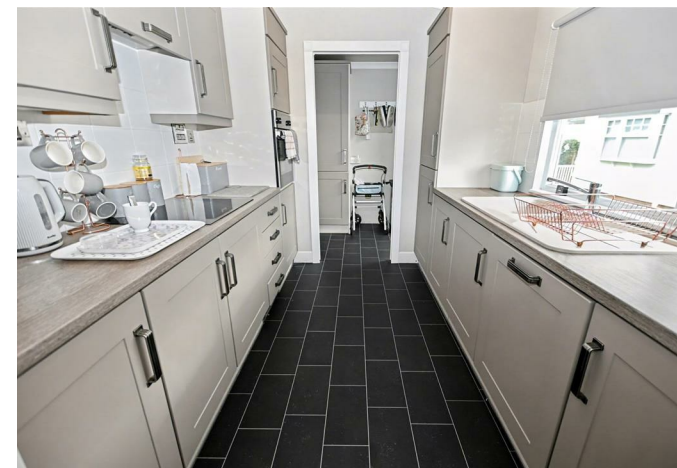
£245,000



Offered with no onward chain - Richard Poyntz & Company has the pleasure of offering for sale this superb double unit park home situated in a prime location on the Kings Park Development. The property is positioned centrally on the site, with the restaurant opposite and the swimming pool close by. There is 24-hour security and it is strictly for the over 50s, and has a picturesque fishing lake and an on-site convenience store.

The property itself, in our opinion, is presented to a high standard throughout and has ample living accommodation, a superb size "L" shaped lounge/diner, modern fitted kitchen with units and drawers at base level, built-in oven, hob extractor, dishwasher, fridge/freezer, and washing machine, all to remain. Utility room. modern three-piece bathroom, two well-proportioned double bedrooms, the master of which has a walk-in wardrobe and a beautiful en-suite shower room. Bedroom two is a superb size and has a contemporary built-in wardrobe.

The property also boasts UPVC double-glazed windows and doors throughout and has an electric central heating system with radiators. Externally, the property has power and an outside tap and a block paved driveway providing off-street parking for approximately two vehicles. Viewing comes highly recommended to truly appreciate the accommodation on offer.



Hall

UPVC entrance door to the front with obscure double-glazed insets into the "L" shaped hallway, coved and papered ceiling, access to loft, radiator, doors off to the accommodation, three storage cupboards, carpet.

Lounge/Diner

19'2 x 18'8 (5.84m x 5.69m)

Superb size "L" shaped room with vaulted ceilings that are coved and papered, four UPVC double-glazed windows to two aspects, three radiators, attractive wallpaper decor, ample room for table and chairs, opening to the kitchen, carpet, TV, and power points.

Kitchen

9'3 x 7'10 (2.82m x 2.39m)

Coved and papered ceiling, UPVC double-glazed window to the rear, wallpaper decor and tiling to the splashbacks, modern units at base and eye-level with matching drawers and work surface over incorporating one and a quarter drainer sink with chrome mixer tap, four-ring electric hob with extractor over and separate waist height oven, built-in fridge/freezer, dishwasher and all to remain. Vinyl floor covering, opening to the utility room.

Utility Room

9'2 x 5' (2.79m x 1.52m)

Coved and papered ceiling, UPVC obscure double-glazed

door to the rear, radiator, built-in store cupboard housing a heater cylinder, modern base and eye-level units, washing machine to remain, vinyl floor covering, panelled door leading back to the hallway, UPVC double-glazed door providing access to the rear of the property.

Bedroom One

10'9 x 9'4 (3.28m x 2.84m)

Coved and papered ceiling, UPVC double-glazed window to the front, radiator, attractive wallpaper decor to the walls, opening to the inner hall

Inner Hall

Coved and papered ceiling, attractive wallpaper decor, doors to the walk-in wardrobe, and en-suite

En-Suite

Coved and papered ceiling, obscure UPVC double-glazed window to the rear, heated towel rail, wallpaper decor, tiling to the splashback areas, vinyl floor covering. Superb three-piece shower room comprising of pedestal wash hand basin with chrome mixer taps, low-level push flush w/c, double shower tray with glass screen and wall-mounted chrome shower.

Walk In Wardrobe

Various hanging rails for clothing.

Bedroom Two

9'9 x 9'3 (2.97m x 2.82m)

Again, a good-sized double bedroom, coved and papered ceiling, UPVC double-glazed window to the rear, radiator, attractive wallpaper decor, contemporary wardrobes to remain, carpet.

Bathroom

Coved and papered ceiling, obscure UPVC double-glazed window to the front, heated towel rail, wallpaper decor, tiling to the splashback areas, vinyl floor covering. Modern three-piece white suite comprising of low-level push flush w/c, panelled bath with chrome mixer taps and shower attachment, pedestal wash hand basin with chrome mixer taps.

Exterior

The gardens are mainly laid to lawn with a step up to the front entrance door and to the rear utility door. There is also a block paved driveway providing off-street parking for approximately two vehicles, a power point and tap, and brick brick-built shed for storage.

Agents Note

The Ground Rent is £330.00, We are advised via the sellers.





**richard
poyntz**

TOTAL APPROX. FLOOR AREA 682 SQ.FT. (63.4 SQ.M.)

Whilst every attempt has been made to ensure the accuracy of the floor plan contained here, measurements of doors, windows, rooms and any other items are approximate and no responsibility is taken for any error, omission, or mis-statement. This plan is for illustrative purposes only and should be used as such by any prospective purchaser. The services, systems and appliances shown have not been tested and no guarantee as to their operability or efficiency can be given

Made with Metropix ©2019

Misrepresentation Act 1967: These details are prepared as a general guide only, and should not be relied upon as a basis to enter a legal contract or commit expenditure. And any interested party should rely solely on their own Surveyor, Solicitor/Conveyancer or other professionals before committing themselves to any expenditure or other legal commitments. If any interested party wishes to rely upon any information from the Agent, then a request should be made and specific written confirmation can be provided. The Agent will not be responsible for any verbal statement made by the Agent or any member of Staff, as only a specific written confirmation can be provided. The Agent will not be responsible for any loss other than what specific written confirmation has been requested.

Property Misdescription Act 1991 The Agent has not tested any apparatus, equipment, fixture, fittings or services and so does not verify they are in working order, fit for purpose, or within ownership of the sellers, therefore the buyer must assume the information is incorrect. Neither has the Agent checked the legal documentation to verify legal status of the property. A buyer must assume the information is incorrect until it has been verified by their own Solicitors/Conveyancers. Nothing concerning the type of construction or the condition of the structure is to be implied from the photograph or plans for the property. Photographs of the interior of the property are given purely to give an indication of décor/style etc., and does not imply that any furniture/fittings etc., are included. A fixtures & fittings list will be provided by the Solicitors/Conveyancers in due course. The sales particulars may change in the course of time and any interested party is advised to make a final inspection of the property prior to exchange of contracts



Tel No: 01268 699 599 | Fax: 01268 699 080 | Email: rp@richardpoyntz.com
Registered Office: Richard Poyntz & Company, 11 Knightswick Road, Canvey Island SS8 9PA

Partners: Richard P. Poyntz F.N.A.E.A., James R. Poyntz M.N.A.E.A., Anna L. Poyntz & Sara Poyntz • V.A.T No: 731 4287 45
 Richard Poyntz & Co (Partnership) is an introducer appointed representative of Stonebridge Mortgage Solutions Ltd for mortgage and insurance introductions.
 Stonebridge Mortgage Solutions Ltd is authorised and regulated by the Financial Conduct Authority.

